

MIT OpenCourseWare
<http://ocw.mit.edu>

7.13 Experimental Microbial Genetics
Fall 2008

For information about citing these materials or our Terms of Use, visit: <http://ocw.mit.edu/terms>.

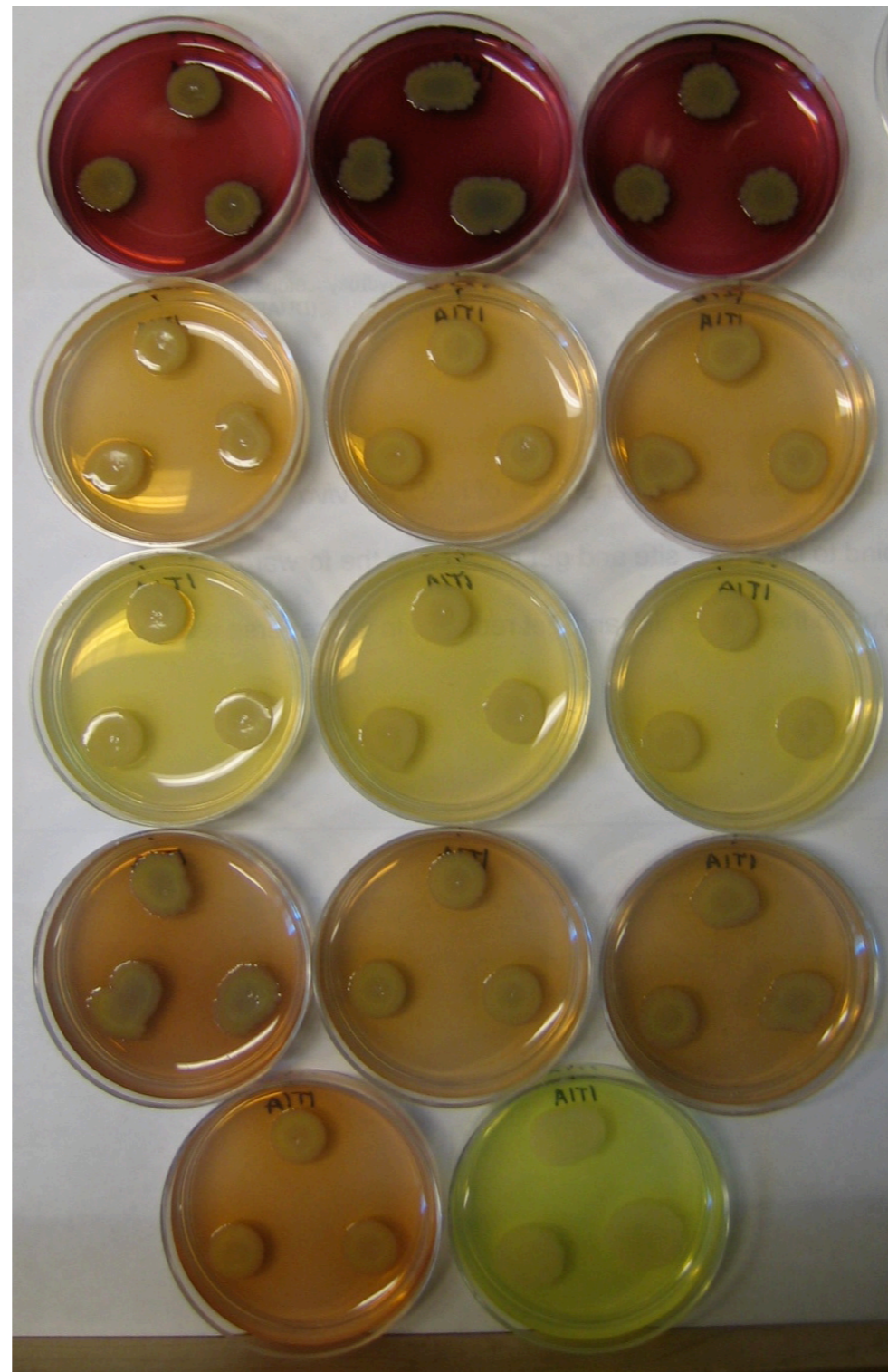
Medium: 1% tryptone, 1% agar

“Big Blue”
(contains extra copy of *phzM*)

wild type

$\Delta mexGHI-opmD$

$\Delta soxR$



$\Delta phsS$ $\Delta phzA1-G1$
 $\Delta phzA2-G2$

(the first three strains are shown in triplicate; the last two are controls so are shown one replicate each)