

## Project 8

### 3D Traveltime Tomography with Earthquake Data in Iran

This project is going to apply 3D first-arrival traveltimes tomography in TomoPlus to image the crustal structures under Iran with earthquake traveltimes data. The 3D traveltimes tomography in TomoPlus does not require sources fixed on the surface. Actually they can be anywhere, even in the Earth.

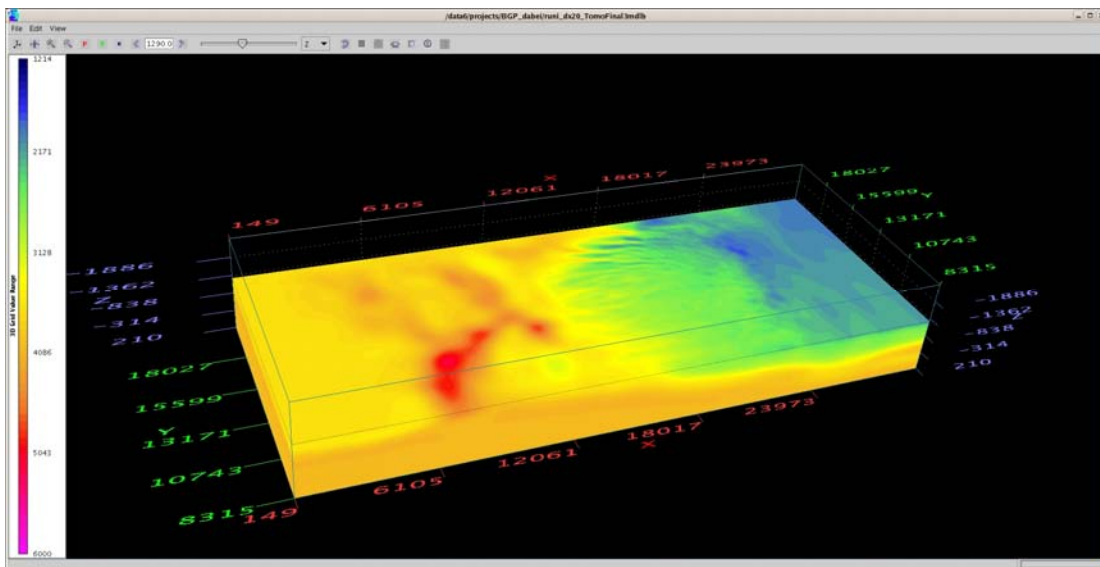
This project includes the following steps: 1) prepare traveltimes data in the .3dtt format, and then convert to .3dttb format (binary); 2) produce an initial velocity model and tomography; 3) run 3D traveltimes tomography.

#### Software Offered:

TomoPlus

#### Documents Offered

TomoPlus training manual (follow the 3D example)



MIT OpenCourseWare  
<http://ocw.mit.edu>

12.571 Near-Surface Geophysical Imaging  
Fall 2009

For information about citing these materials or our Terms of Use, visit: <http://ocw.mit.edu/terms>.