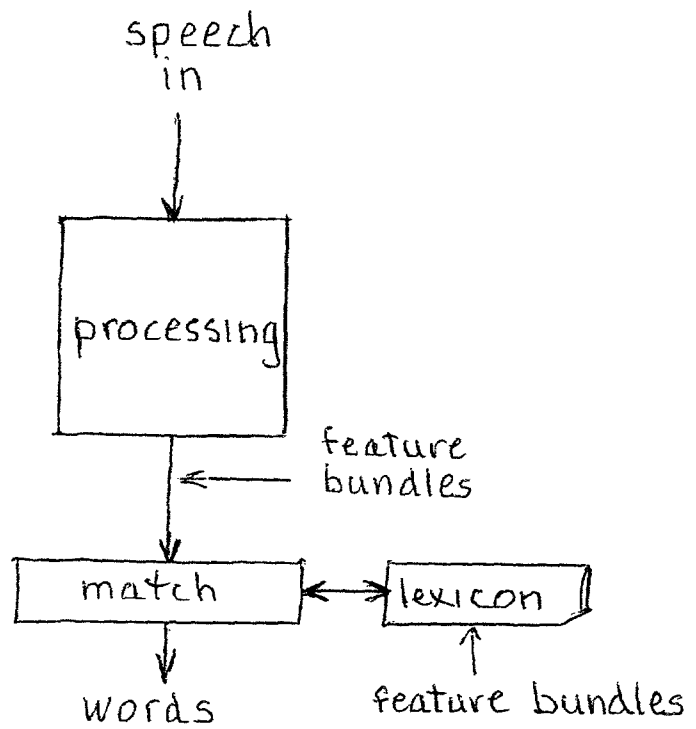


# Identifying words in running speech



σ                      σ                      σ

o                      r                      o                      r                      o                      r

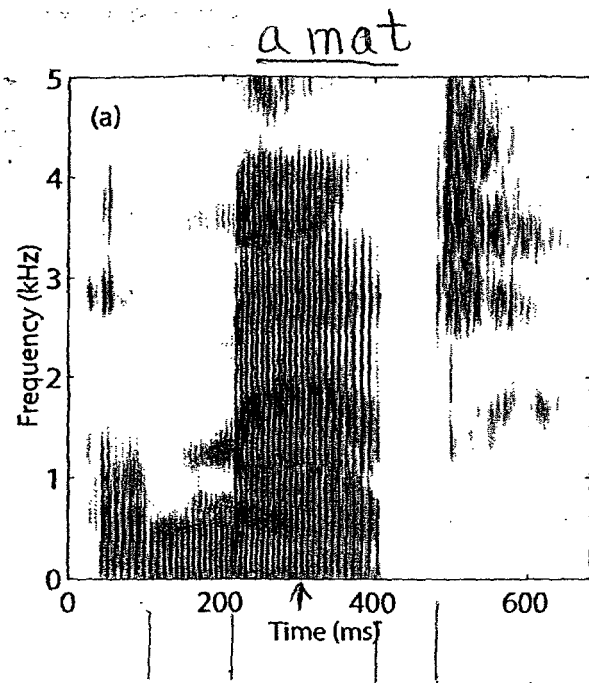
	s	ʌ	d	ə	n	h	ɛ	l	p
Vowel		+		+			+		
Glide						+			
Consonant	+		+		+			+	+
Stressed		+		-			+		
Reducible		-		+			-		
Continuant	+		-		-			-	-
Sonorant			-		+			+	-
Strident	+								
Lips									+
Tongue blade	+		+		+			+	
Tongue body									
Round									-
Anterior	+		+		+			+	
Lateral								+	
High		-		-			-		
Low		-		-			-		
Back		+		+			-		
Tense		-					-		
Spread Glottis						+			
Nasal					+				
Stiff vocal folds	+		-						+

Lexical representations for the words sudden and help.  
 The syllable structure of each word is schematized at the top (σ = syllable, o = onset, r = rime).

Example: identifying a simple word.

find landmarks

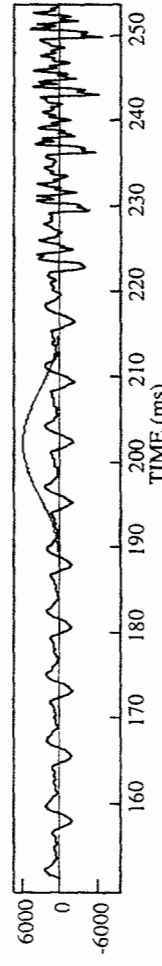
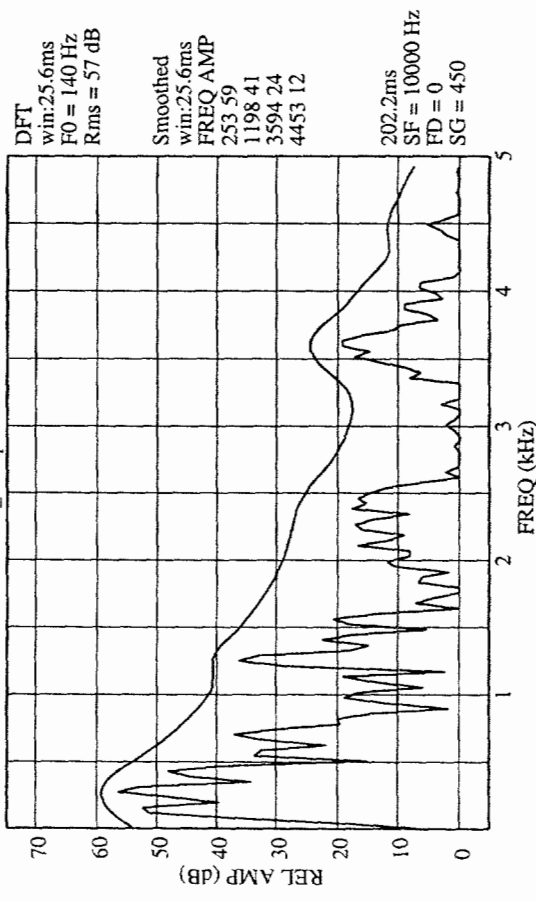
look around the landmarks



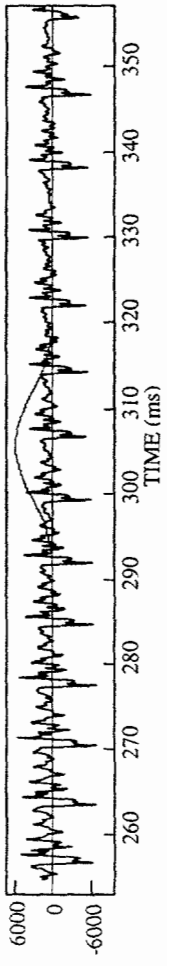
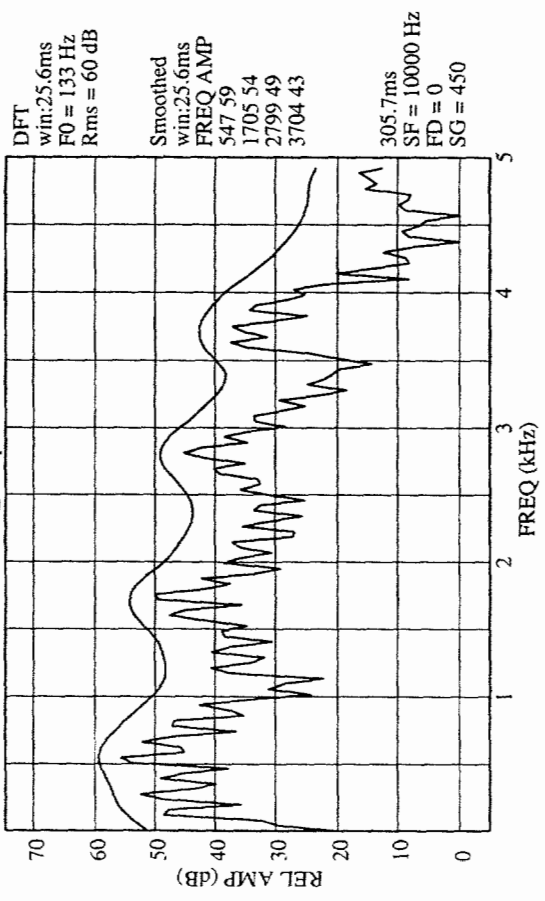
landmarks

# a mat

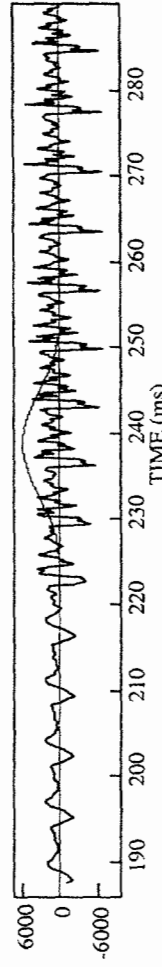
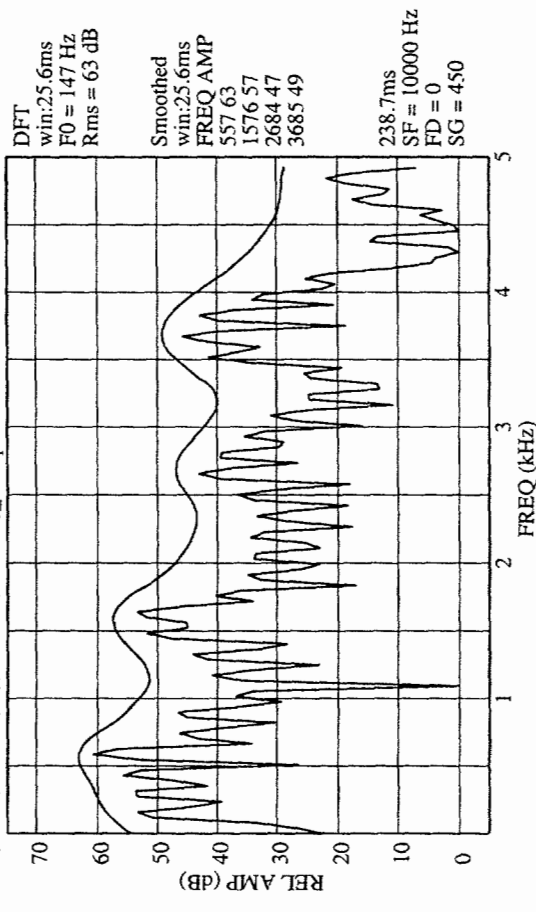
Thu Apr 2, 2004  
File: nmat1.wav  
Current Dir: /usr/users/stevens\_data/pisoni



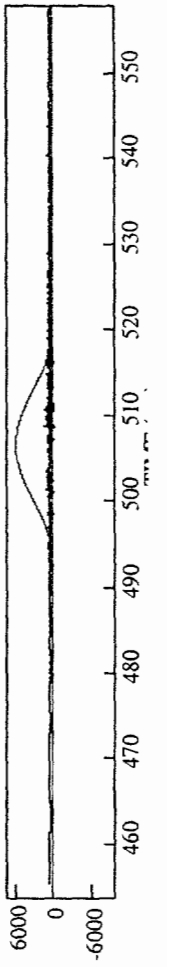
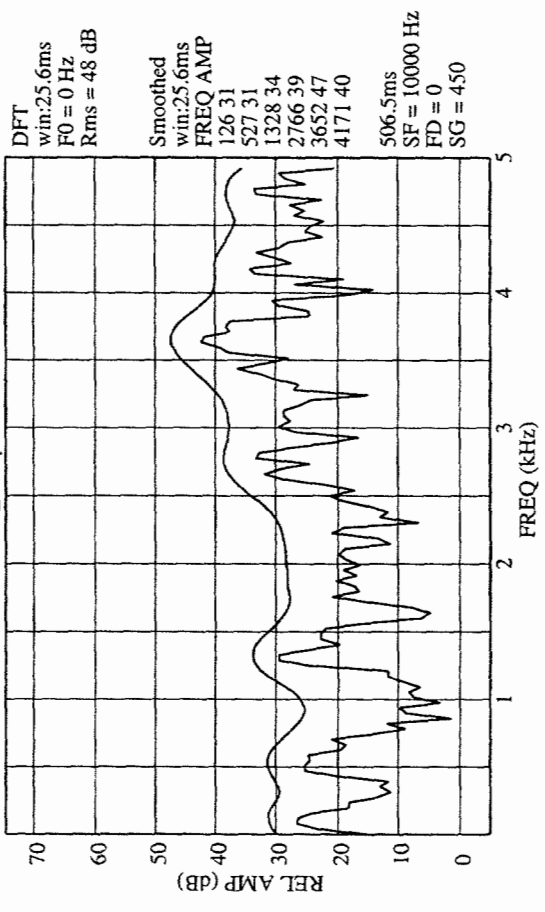
Thu Apr 22 09:38:17 2004  
File: nmat1.wav  
Current Dir: /usr/users/stevens\_data/pisoni

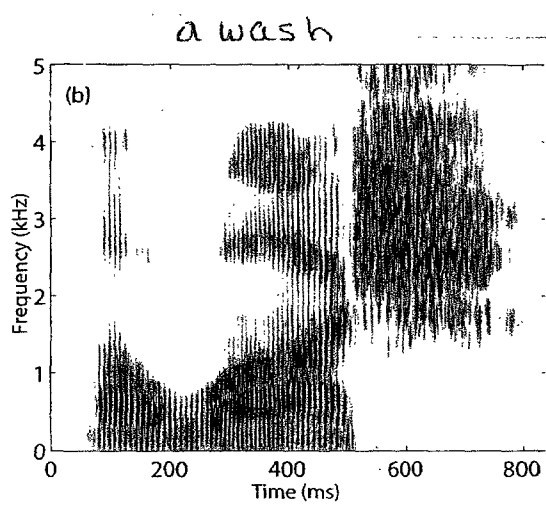
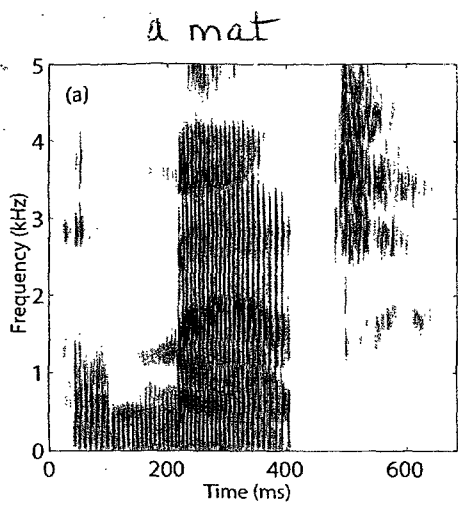
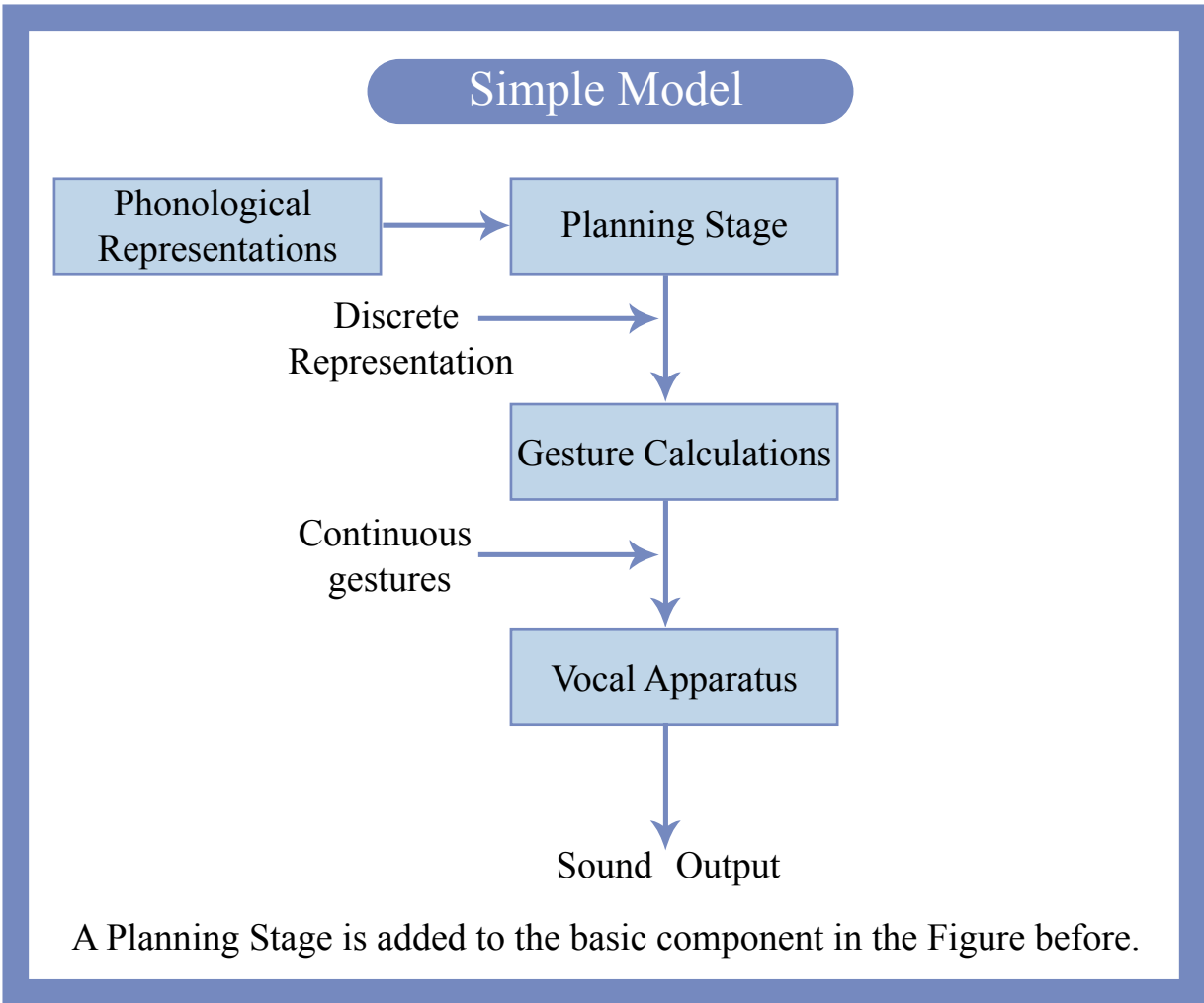


Thu Apr 22 09:38:03 2004  
File: nmat1.wav  
Current Dir: /usr/users/stevens\_data/pisoni



Thu Apr 22 09:38:41 2004  
File: nmat1.wav  
Current Dir: /usr/users/stevens\_data/pisoni

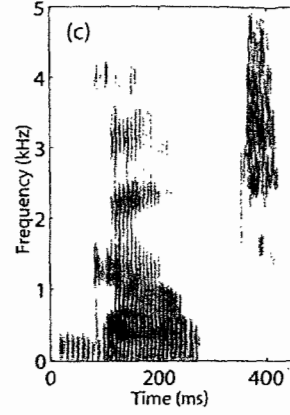
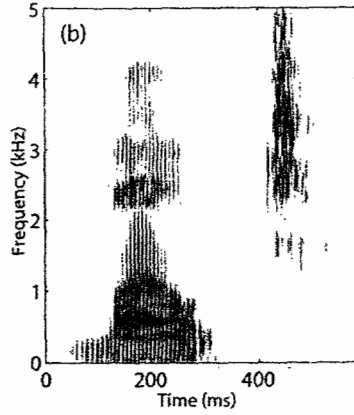
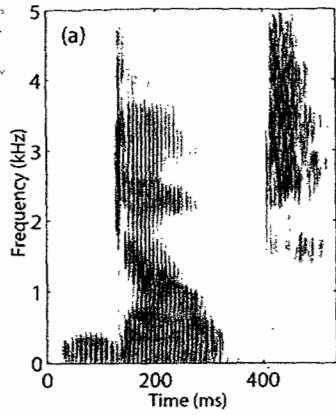




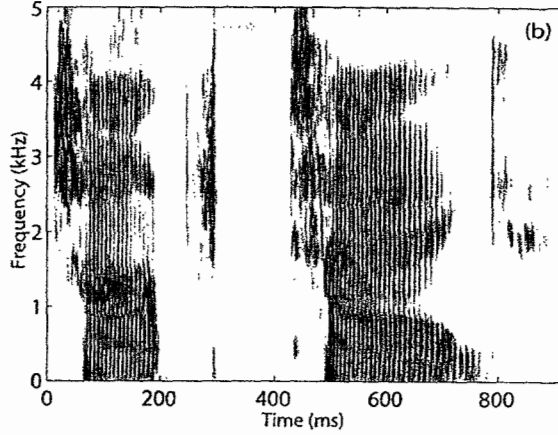
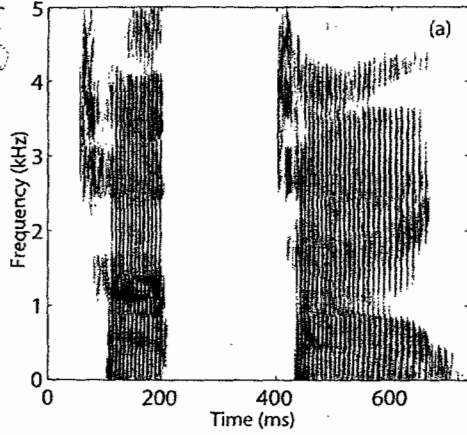
dote

boat

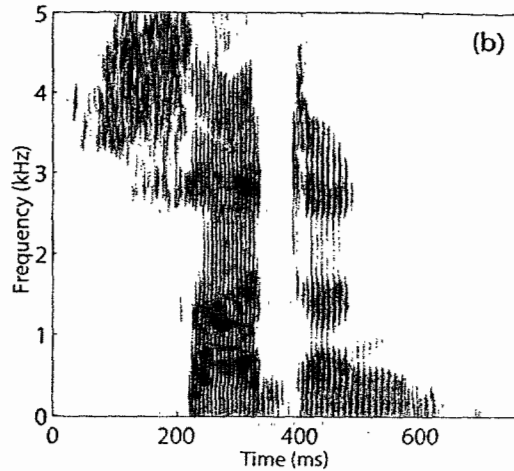
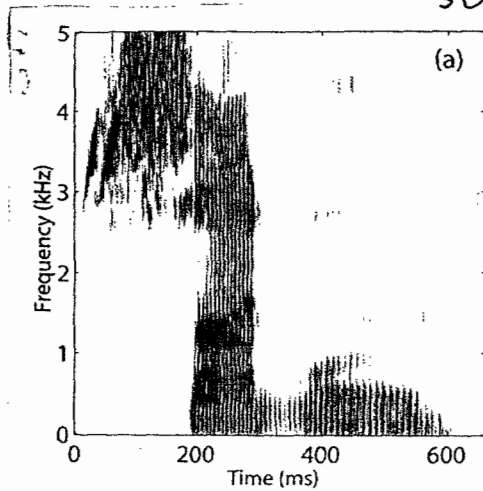
goat



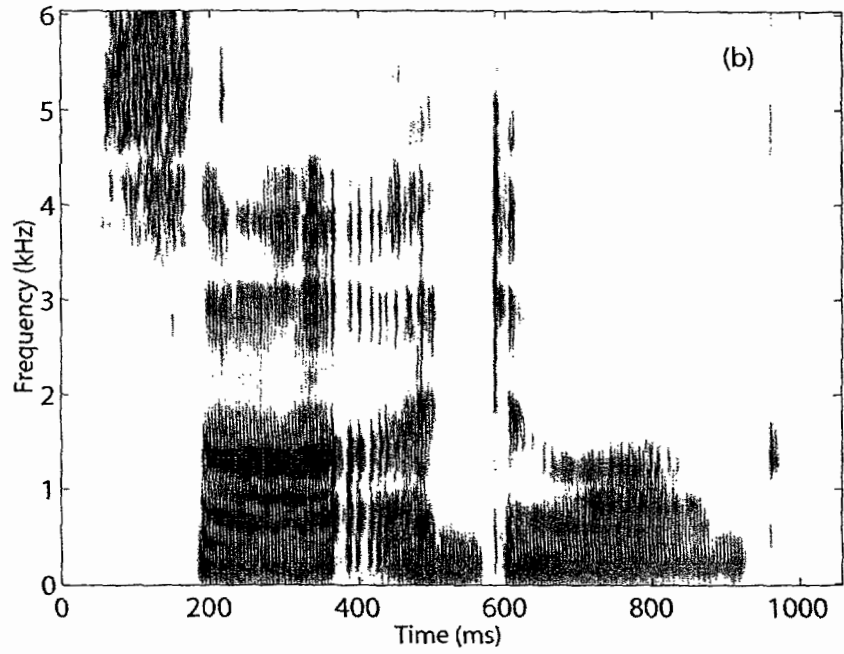
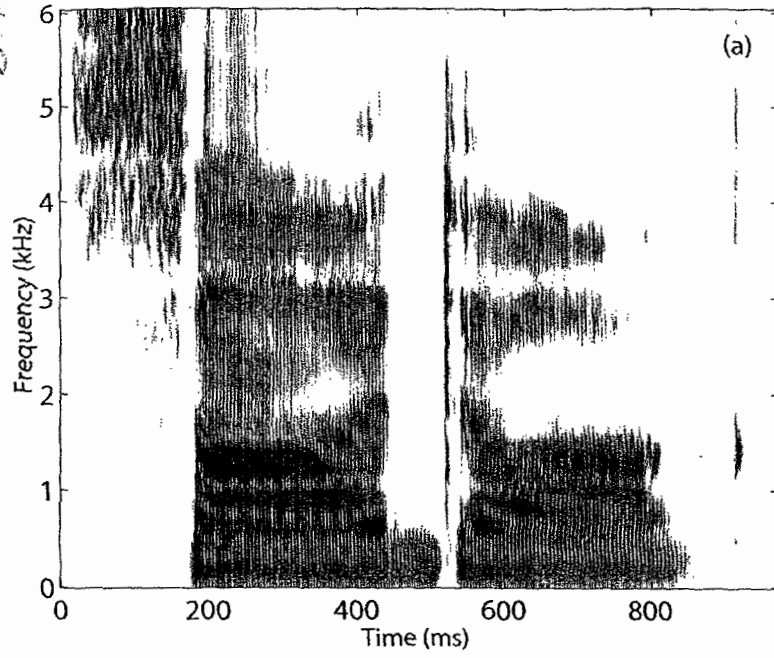
top tag



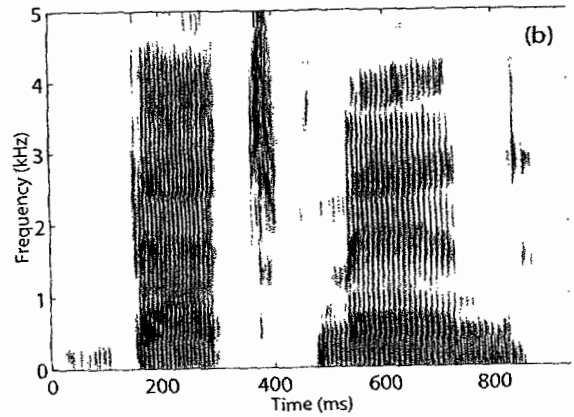
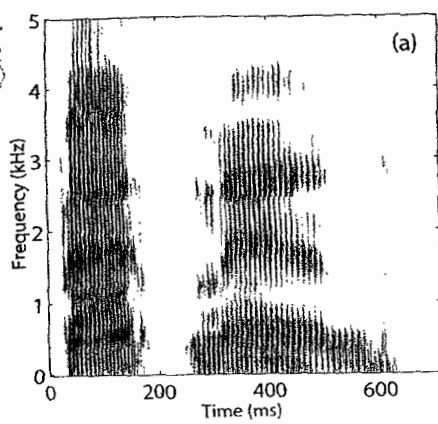
sudden



-6- saw a dog

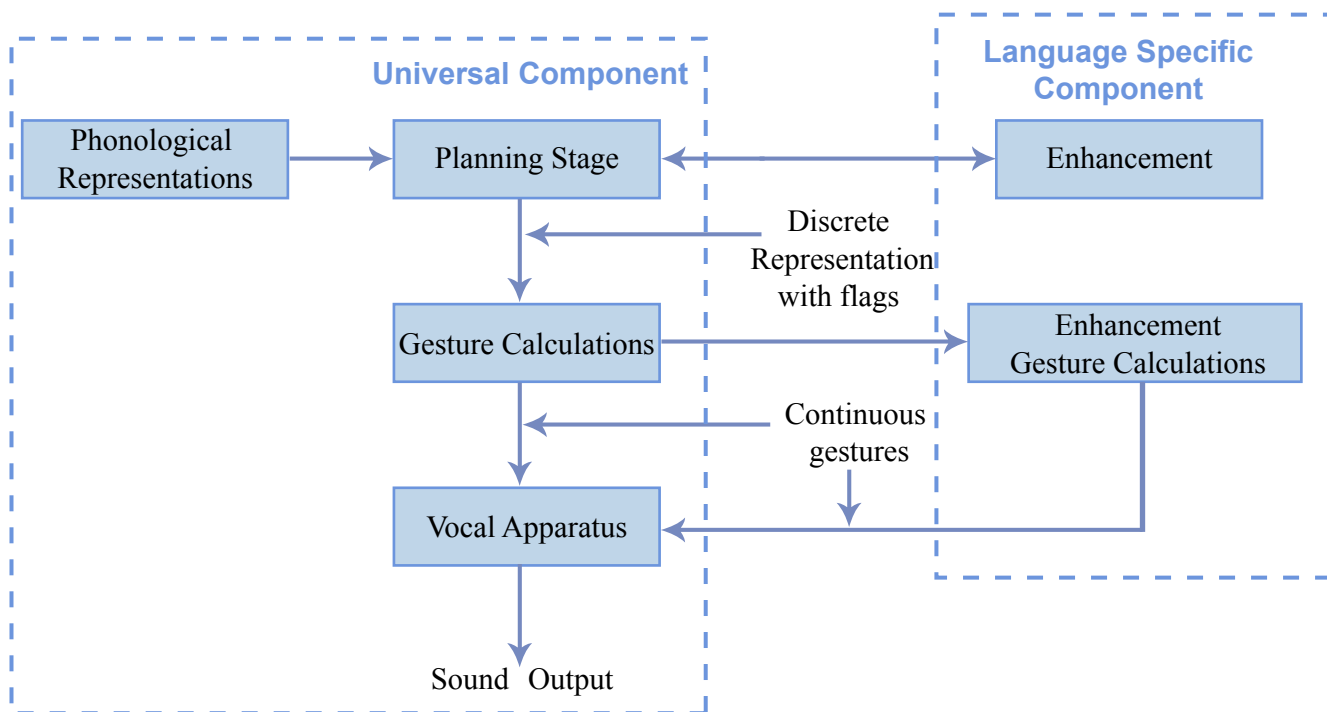


saw a dog

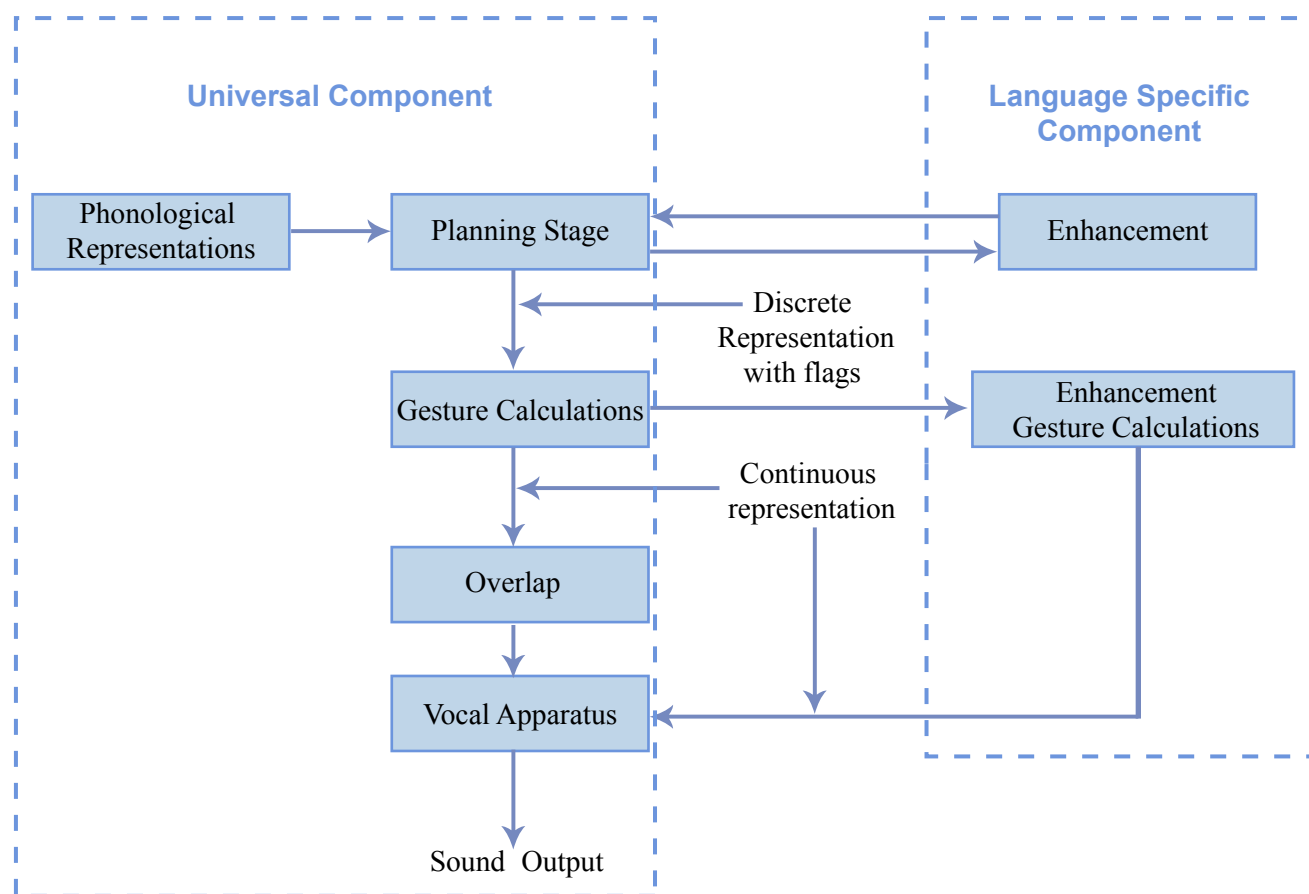


bat man

## REVISED MODEL

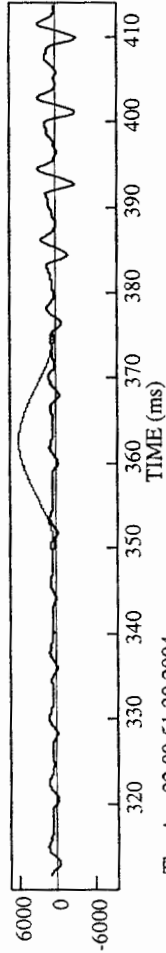
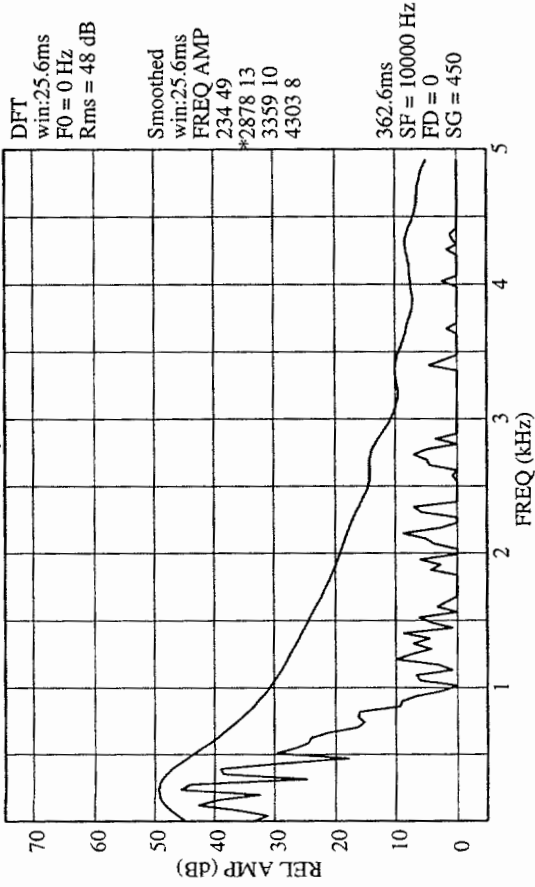


Enhancement and Enhancement Gesture Calculations are added to the 'Simple Model' figure. The Enhancement component augments Planning Stage representations by flagging relevant features. Enhancement gestures are calculated for these flagged features.

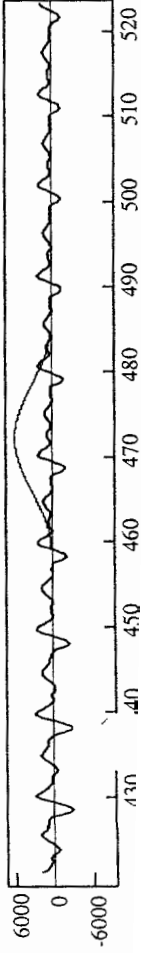
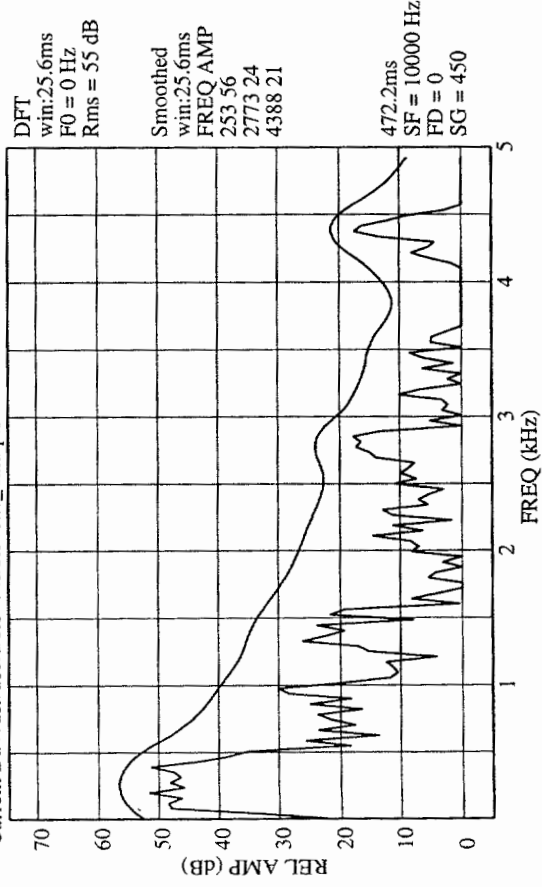


# sudden

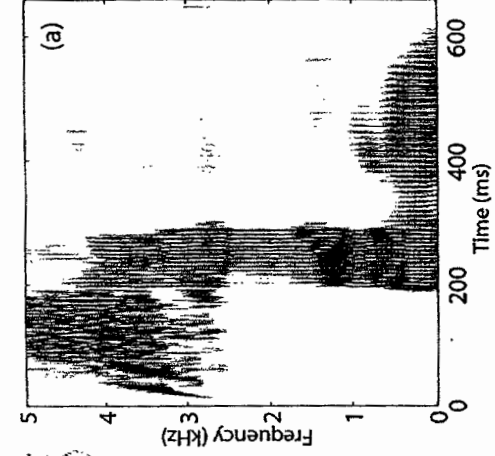
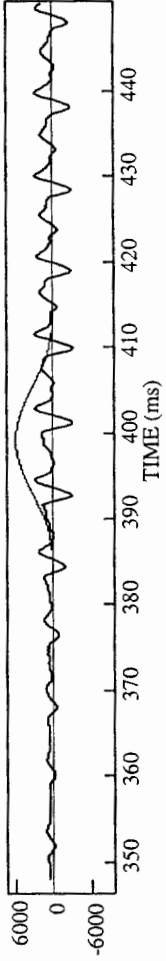
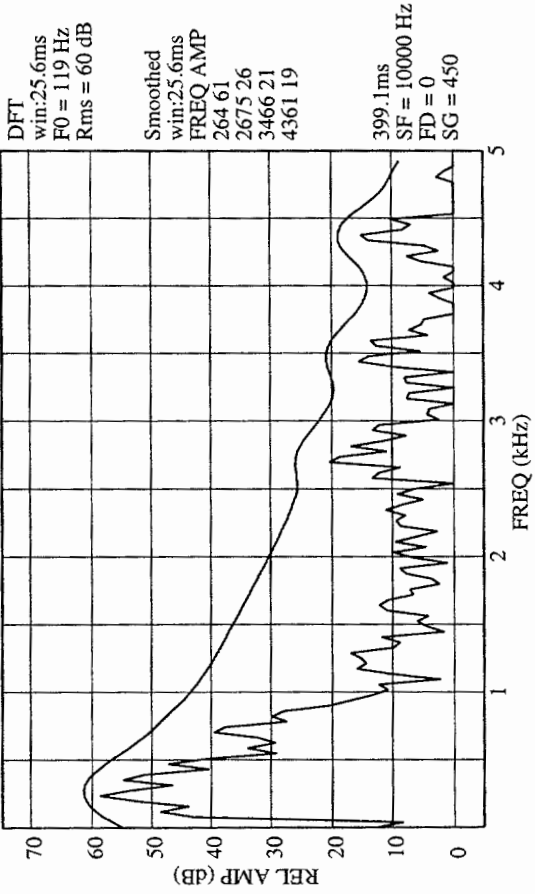
Thu Apr 22 09:50:49 2004  
File: nsudden1.wav  
Current Dir: /usr/users/stevens/stevens\_data/pisoni



Thu Apr 22 09:51:20 2004  
File: nsudden1.wav  
Current Dir: /usr/users/stevens/stevens\_data/pisoni



Thu Apr 22 09:51:04 2004  
File: nsudden1.wav  
Current Dir: /usr/users/stevens/stevens\_data/pisoni





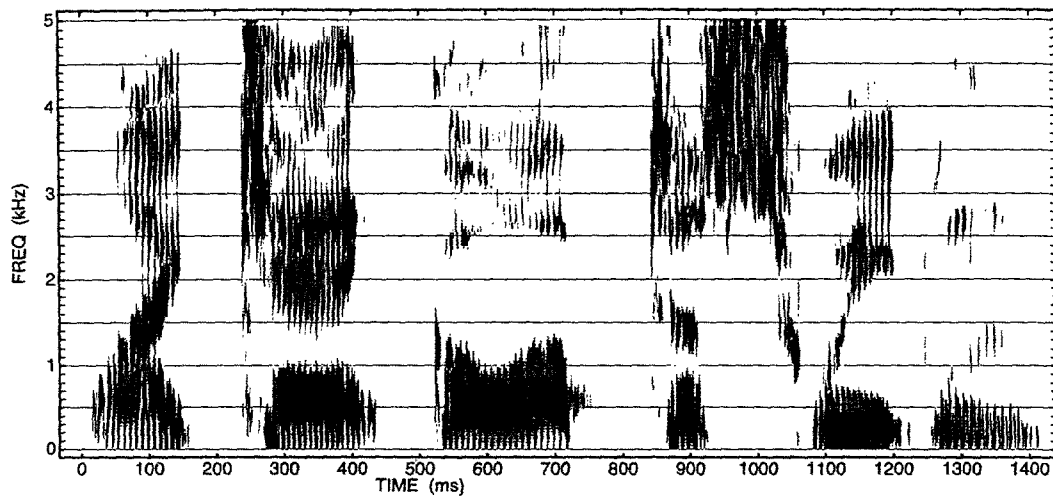


Figure 10.5 Spectrogram of the sentence *I can't go up to Sweden* (male speaker), illustrating modifications of consonants when they occur in a sequence of two or more consonants. The text discusses the sequences /nt#g/ (400 to 550 ms), /p#t/ (700 to 850 ms), /sw/ (1000 to 1150 ms), and /dn/ (1200 to 1270 ms).

Courtesy of MIT Press. Used with permission.

