

Double Readings:

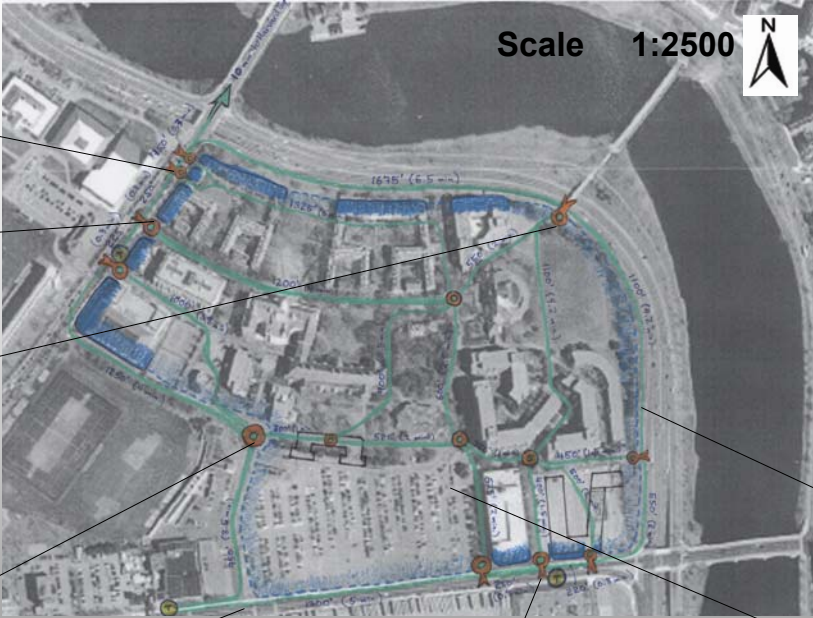
Reading institutional objectives from built form


11.332J Urban design studio
September 19, 2003

Todd Kohr & Eric Orozco

Harvard Business School campus

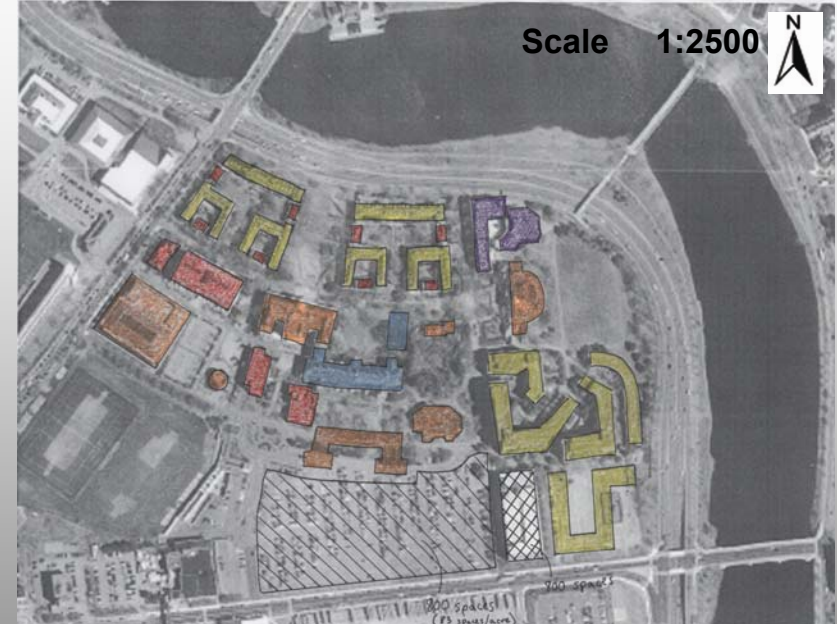
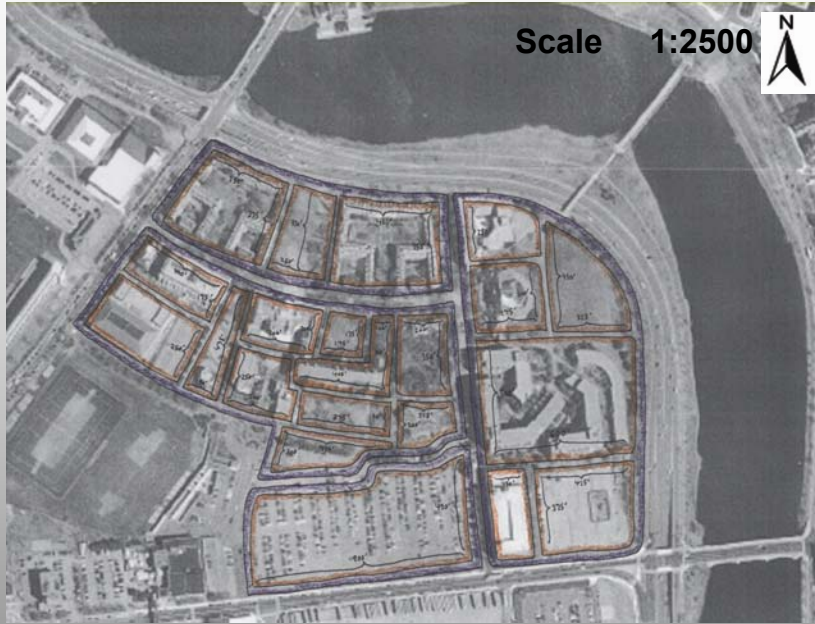
Thresholds, transit, and travel distances










-  Destination / convergence point
-  Threshold
-  Pedestrian travel distance
-  Bus stop
-  Hard edge
-  Soft edge



Block, parcel, and land use





-  Block
-  Parcel

-  Residential
-  Classroom
-  Administrative
-  Other institutional
-  Mixed use
-  Structured parking
-  Surface parking

Open space



 **Green space**
 **Hard space**



Street types





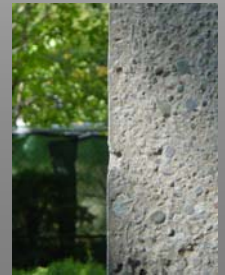
Tunnel system



Materials



-  Historic brick
-  New brick
-  ("Brick") panel
-  Concrete
-  Copper and glass
-  Historic brick with stucco facing



Inferred campus objectives

Ongoing

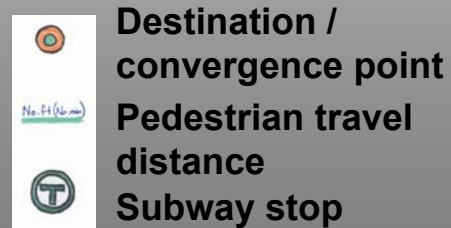
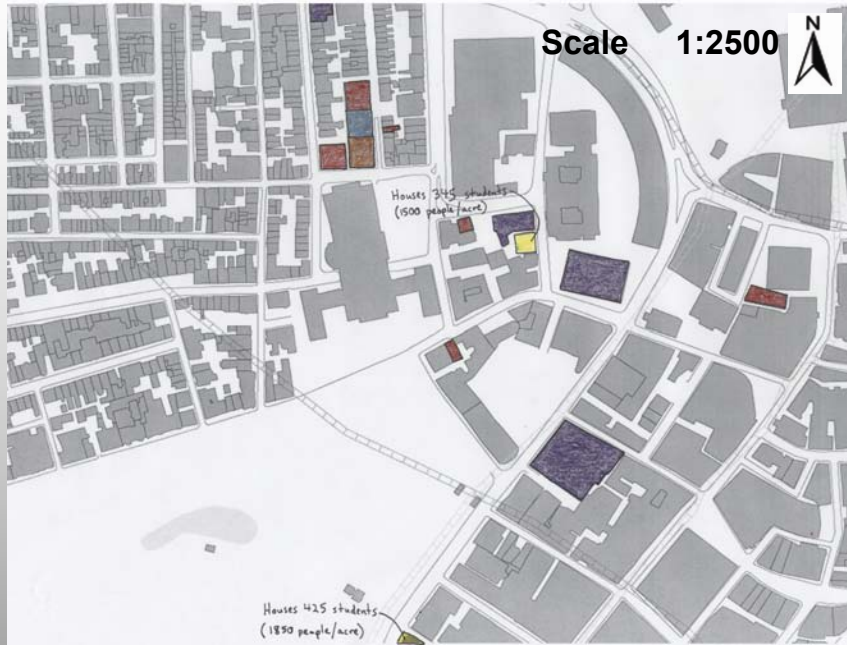
- 1) **Architectural unity**
- 2) **Geographically-contiguous development**
- 3) **Campus security and separation from surroundings**
- 4) **Strong on-campus residential presence, particularly catering to needs of families**
- 5) **Community and informal interaction**
- 6) **Sense of luxury, privilege, and entitlement**

Recent focus

- 7) **Strengthen on-campus residential offerings**
- 8) **Strengthen on-campus community and informal interaction**
- 9) **Demonstrate progressive mindset through contemporary architecture**



Suffolk University campus

Land use, nodes, and travel times



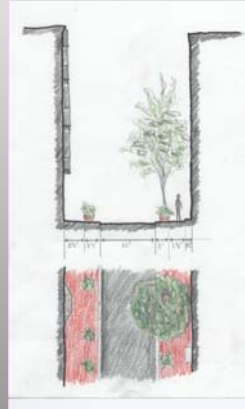
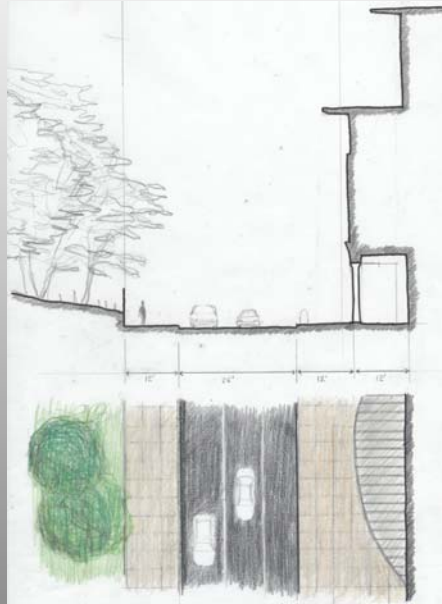
Open space



-  Green space
-  Hard space



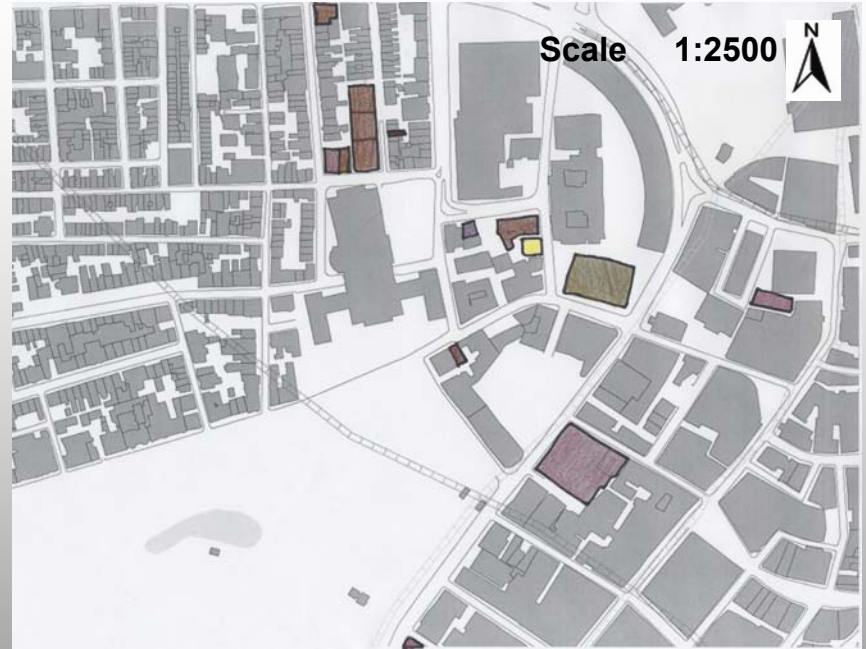
Street types



Materials



-  Brick / masonry
-  Primarily stone
-  Precast concrete panel
-  Precast concrete & glass (curtain wall)
-  Concrete



Inferred campus objectives

Ongoing

- 1) City as campus**
- 2) Relative geographic proximity between buildings**
- 3) Physical presence through clustered acquisition and development on corner of Beacon St. & Somerset Ave.**
- 4) Focus on lobby areas**

Recent focus

- 5) Strengthen on-campus residential offerings**
- 6) Raise visibility of law school**

Comparing the campuses

Numerical comparison

	Harvard	Suffolk ³
Student population ¹	2,000	7,000
Campus area	62 acres	5 acres
% open space ²	53%	0%

	Harvard	Suffolk
Avg. sq. ft. / parcel (residential)	183,000	9,000
Avg. sq. ft. / parcel (classroom)	70,000	12,000
Avg. sq. ft. / parcel (administrative)	66,000	7,500
Avg. sq. ft. / parcel (other institutional use)	75,000	13,000
Avg. sq. ft. / parcel (mixed use)	60,000	35,000

¹ Harvard's student population total includes only full-time students. Suffolk's student population includes both full-time and part-time students.

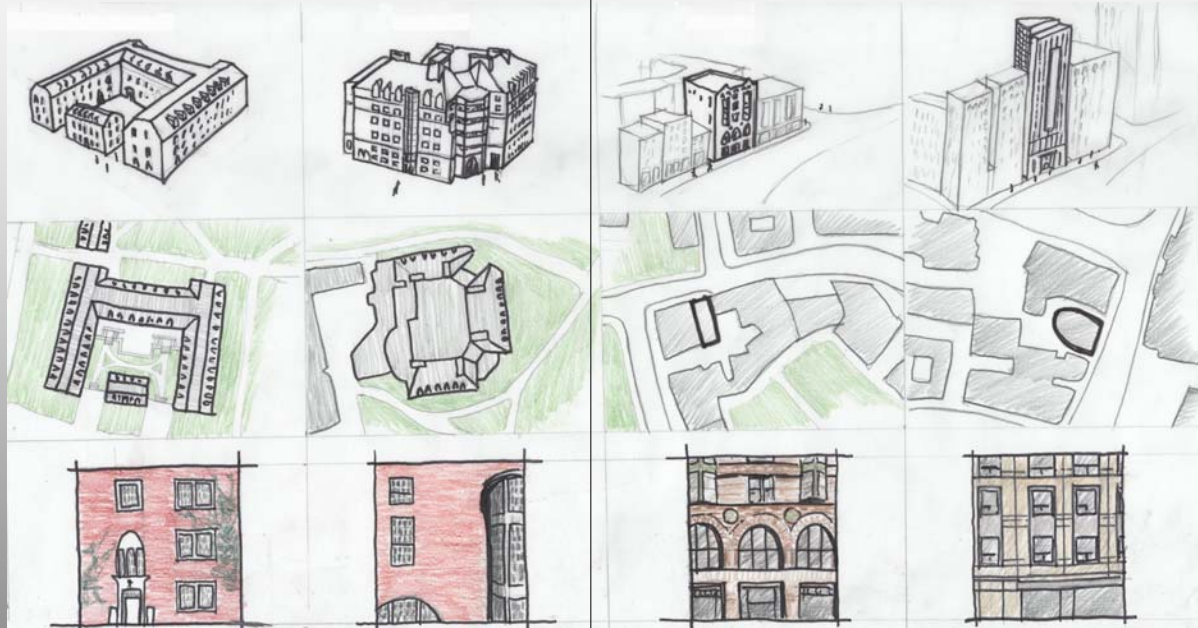
² Open space is calculated as the sum of all green space, plaza space, and surface parking lots. Open space does not include streets or on-street parking.

³ Parcel sizes for Suffolk buildings were assumed to be equivalent to the total building footprint.

Building types

Harvard

Suffolk



Fenestration

15%

30%

35%

35/70%
(front/back)

Harvard



Suffolk

