

Beijing Studio *2004*

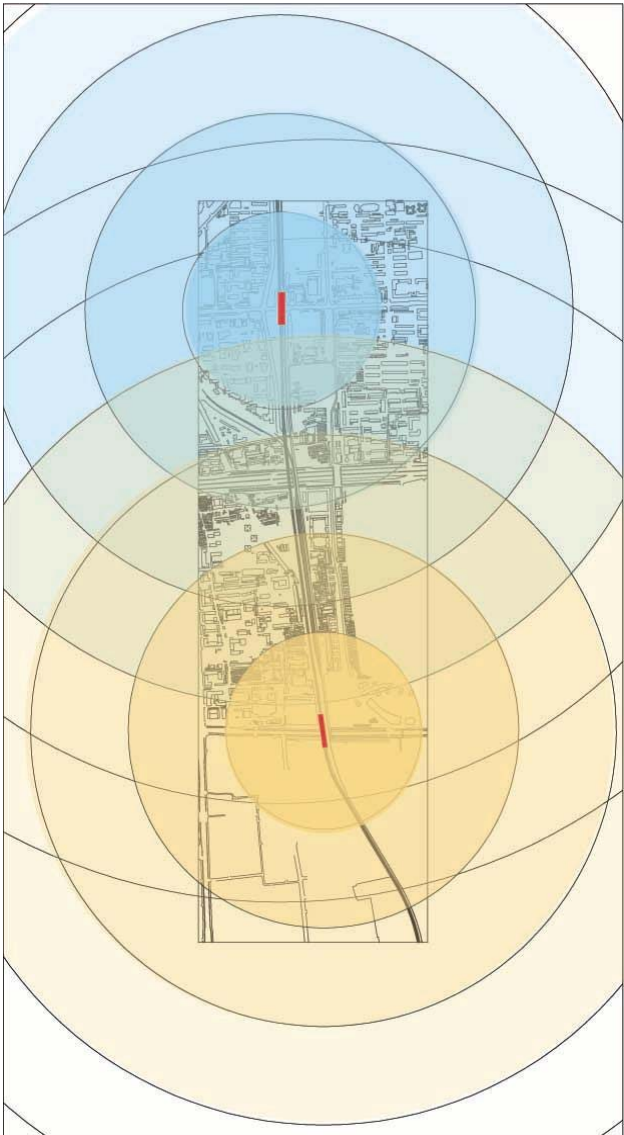
Emily Gillmar, Anubhav Gupta, Mai Xianmin, Nadya Nilina

TEAM **6**

Green Span

Beijing Studio 2004

Emily Gillmar, Anubhav Gupta, Mai Xianmin, Nadya Nilina

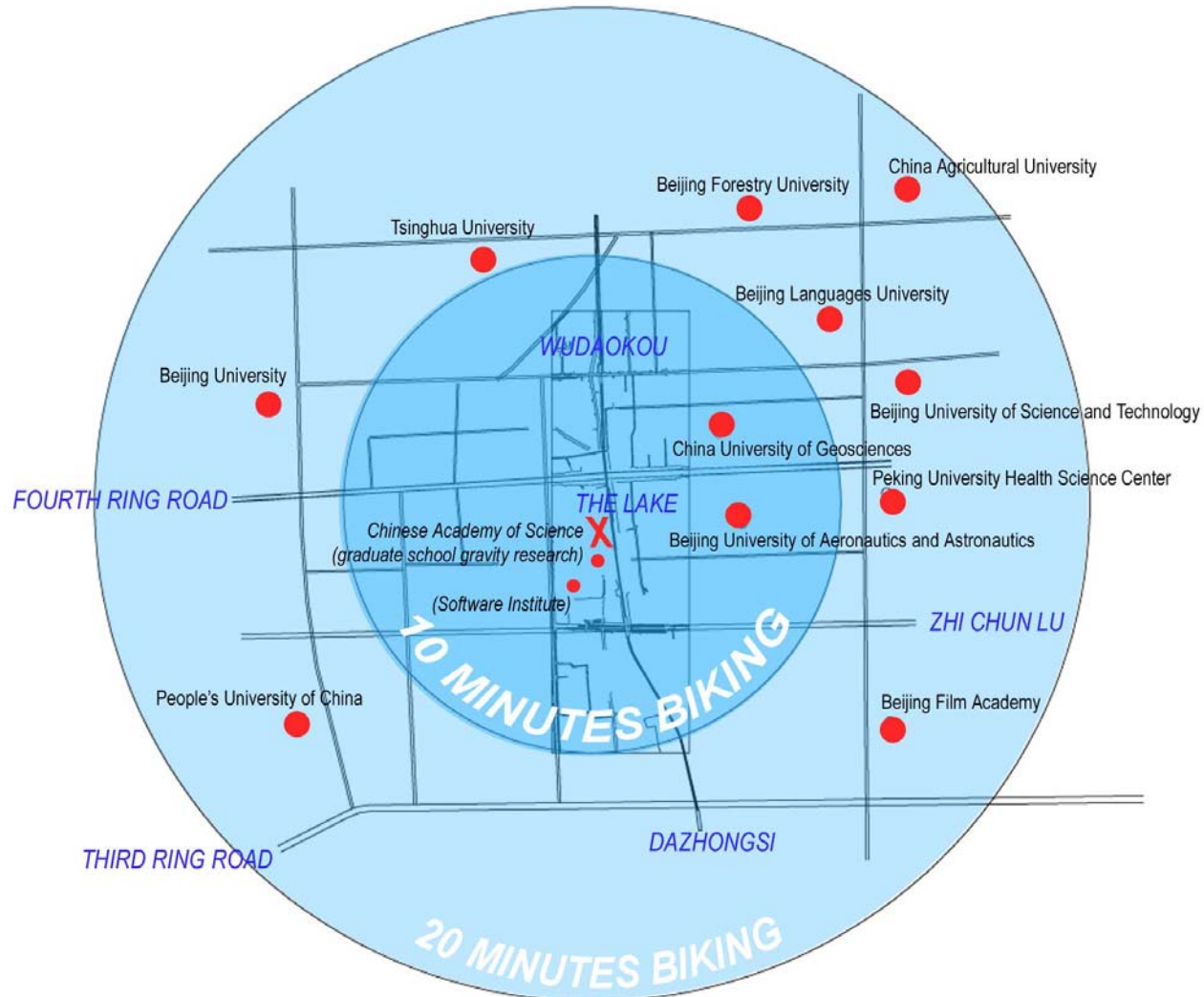


Beijing Studio 2004

Emily Gillmar, Anubhav Gupta, Mai Xianmin, Nadya Nilina

TEAM 6

Green Span



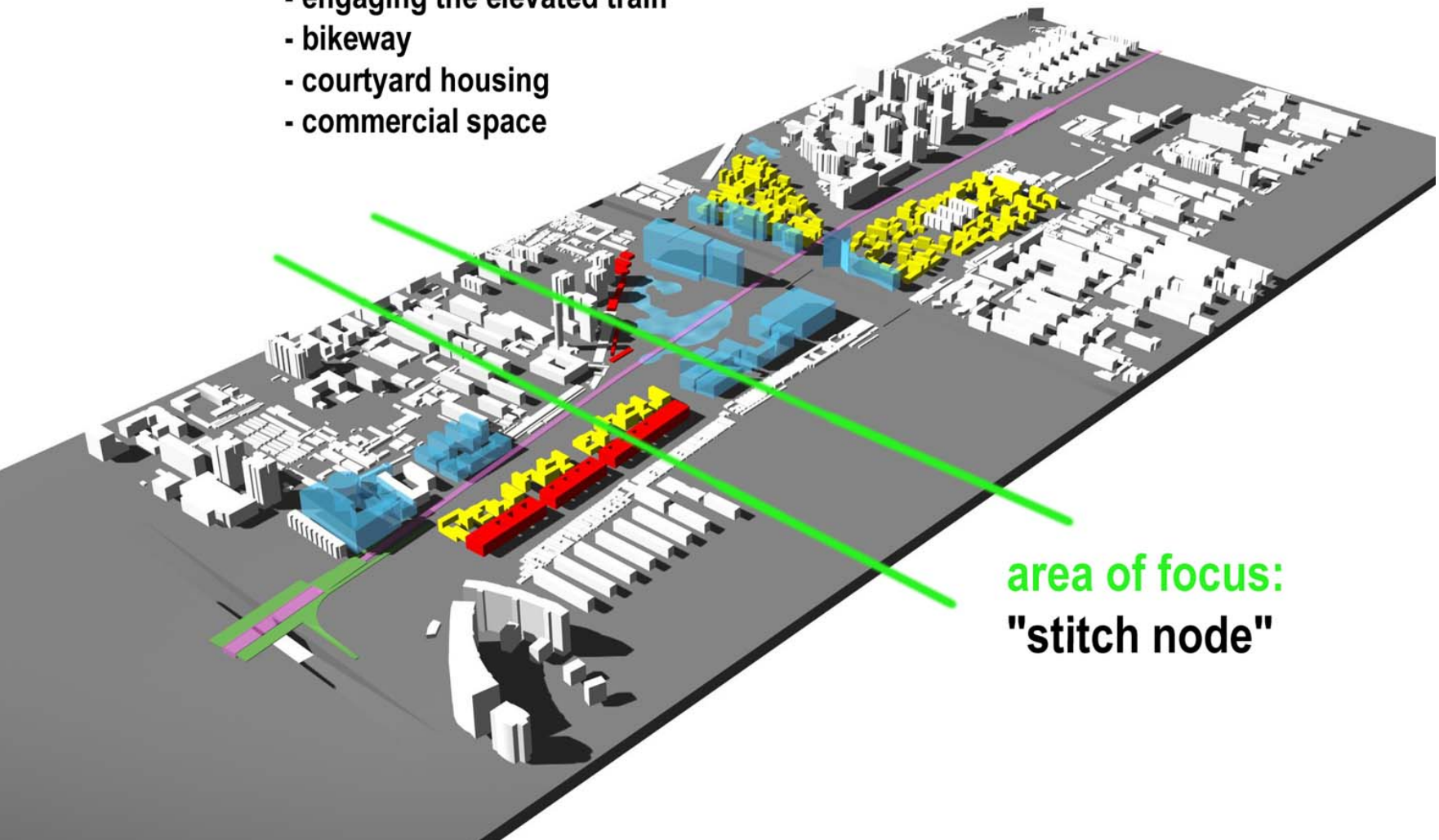
Beijing Studio 2004

Emily Gillmar, Anubhav Gupta, Mai Xianmin, Nadya Nilina

TEAM **6**

Green Span

- gravity tower axis
- art galleries and studio space
- re-use of industrial railroad buildings
- engaging the elevated train
- bikeway
- courtyard housing
- commercial space



area of focus:
"stitch node"

Beijing Studio 2004

Emily Gillmar, Anubhav Gupta, Mai Xianmin, Nadya Nilina

TEAM **6**

Green Span



Beijing Studio 2004

Emily Gillmar, Anubhav Gupta, Mai Xianmin, Nadya Nilina

TEAM **6**

Green Span



Beijing Studio 2004

Emily Gillmar, Anubhav Gupta, Mai Xianmin, Nadya Nilina



Green Span



Beijing Studio 2004

Emily Gillmar, Anubhav Gupta, Mai Xianmin, Nadya Nilina

TEAM **6**

Green Span

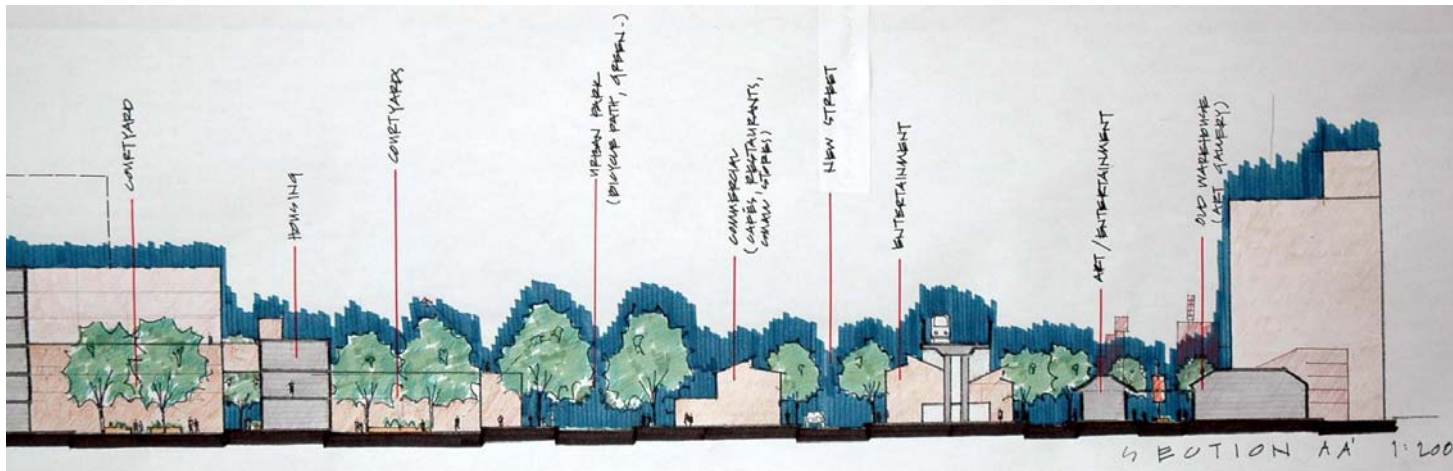
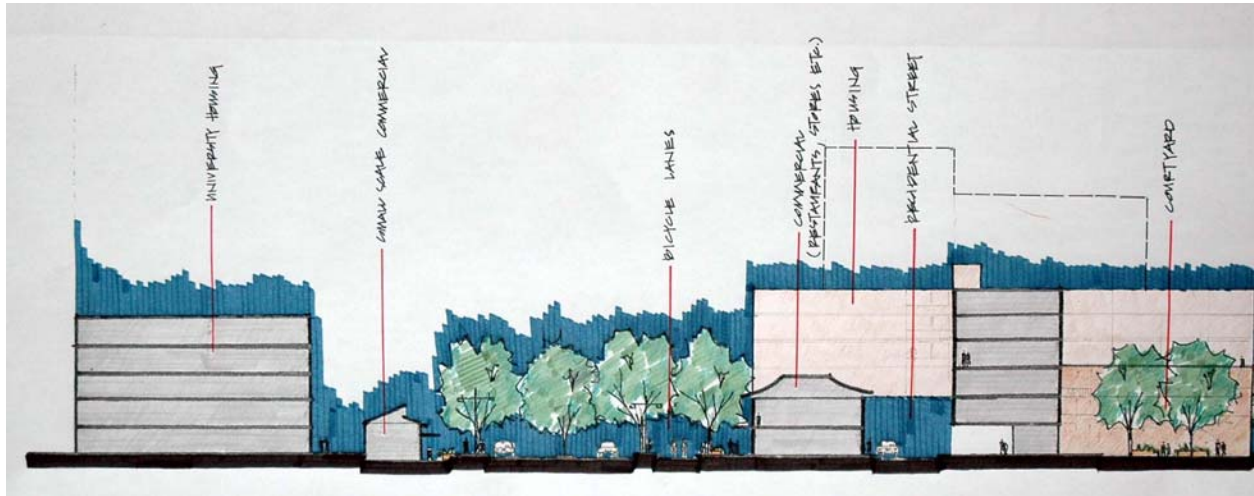


Beijing Studio 2004

Emily Gillmar, Anubhav Gupta, Mai Xianmin, Nadya Nilina

TEAM **6**

Green Span



Beijing Studio 2004

Emily Gillmar, Anubhav Gupta, Mai Xianmin, Nadya Nilina

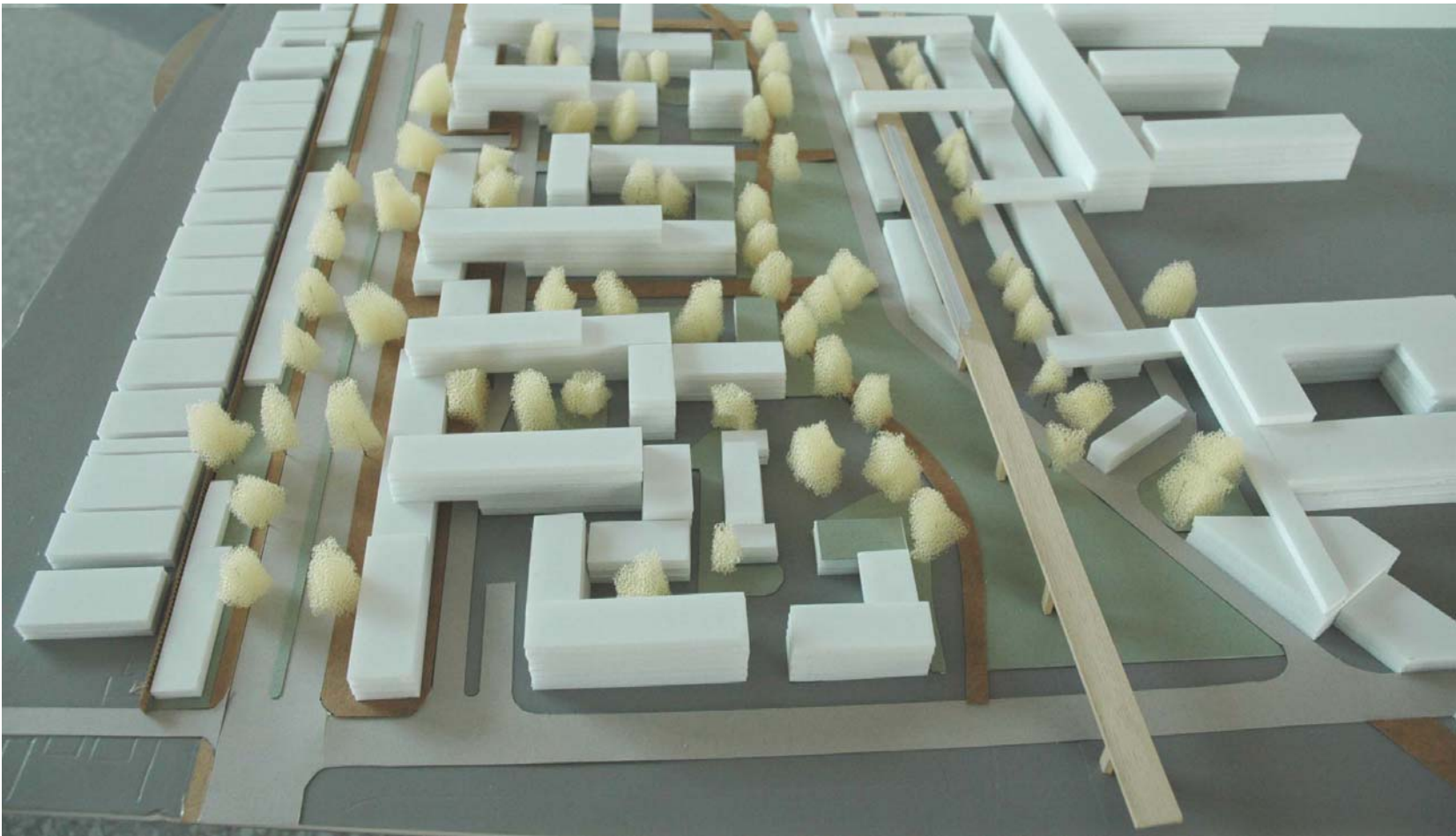
TEAM 6

Green Span



Beijing Studio 2004

Emily Gillmar, Anubhav Gupta, Mai Xianmin, Nadya Nilina



Beijing Studio 2004

Emily Gillmar, Anubhav Gupta, Mai Xianmin, Nadya Nilina

TEAM 6

Green Span

