

→ HOW-TO-DO-IT

MAKING SCIENCE AND ENGINEERING PICTURES

A PRACTICAL GUIDE TO PRESENTING YOUR WORK

Surprisingly, this image of a raw egg was made using a flatbed scanner.

This HOW-TO-DO-IT outlines the process.



First, I had no intention of mucking up the glass on my scanner...keeping it clean is trouble enough without adding egg whites and yolk to its surface!

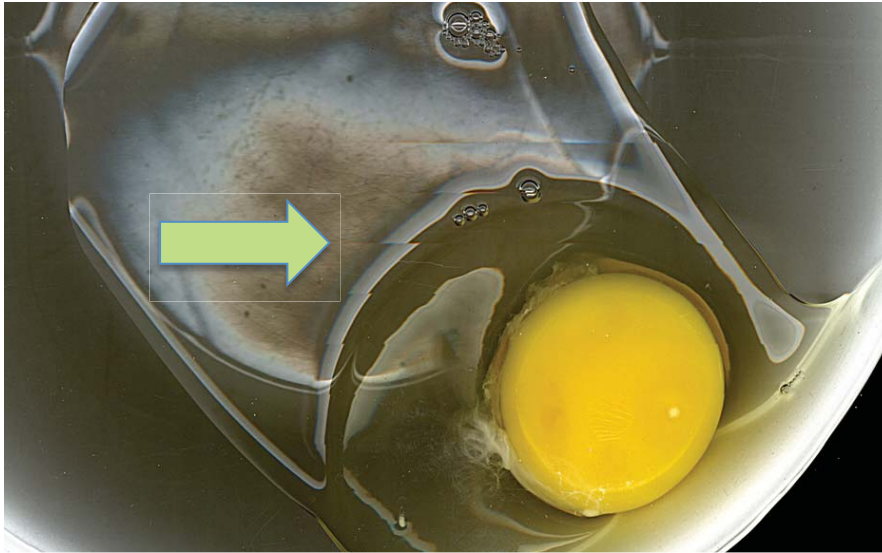
So here, I placed high quality glass on the scanner, and cracked an egg onto it. I quickly placed a bowl over the cracked egg, in order to create a boundary for the egg, so that it ultimately would stop spreading and stay put – at least for the amount of time of the scan.



→ HOW-TO-DO-IT

MAKING SCIENCE AND ENGINEERING PICTURES

A PRACTICAL GUIDE TO PRESENTING YOUR WORK



Look closely at the final image and note the area of the scan where movement of the viscous albumin is apparent.

Notice the shape of the bowl. Think about the process of the scan and why the mid area is dark, allowing us to see the albumin, along with the yolk.

In full disclosure, I had to re-configure this HOW-TO-DO-IT image since I made the original cracked egg image about 20 years ago and had no idea where was the originally used bowl or the protective piece of glass. So this image is a re-creation, so to speak. It's pretty close to the original set-up.

What is a substance that you might want to capture using a flatbed scanner?



MIT OpenCourseWare
<http://ocw.mit.edu>

Resource: Making Science and Engineering Pictures: A Practical Guide to Presenting Your Work
Felice Frakel

The following may not correspond to a particular course on MIT OpenCourseWare, but has been provided by the author as an individual learning resource.

For information about citing these materials or our Terms of Use, visit: <http://ocw.mit.edu/terms>.